

Sept. 8, 2015

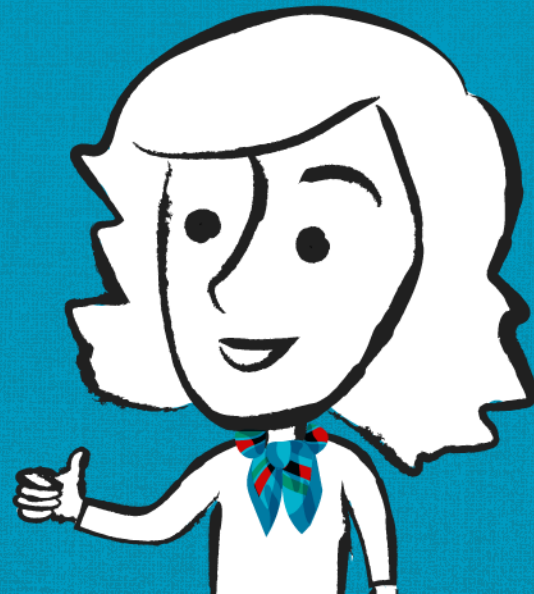


Connecting you with experts. Exploring the latest childhood obesity news and research.

We will begin at 4:05 to allow participants time to join the webinar.

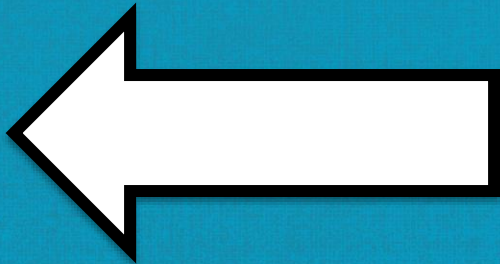
- **Spotlight: A New Model for Integrating Clinical-Community Systems and Tackling Obesity**
- **One on One**
- **What's Next?**
 - **NCCOR's Health Care Efforts**
 - **National Childhood Obesity Awareness Month Thunderclap**

TODAY'S PROGRAM



Need technical assistance? Have a question for our speakers?

Type your question(s) in the chat box located on the left and a representative will respond shortly



Join the conversation on social media
#ConnectExplore



Follow @NCCOR

NCCOR
CONNECT
& EXPLORE

Today's Speakers



Elaine Arkin

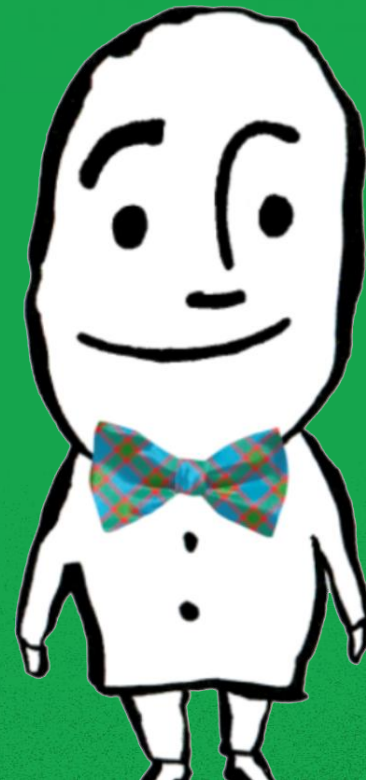
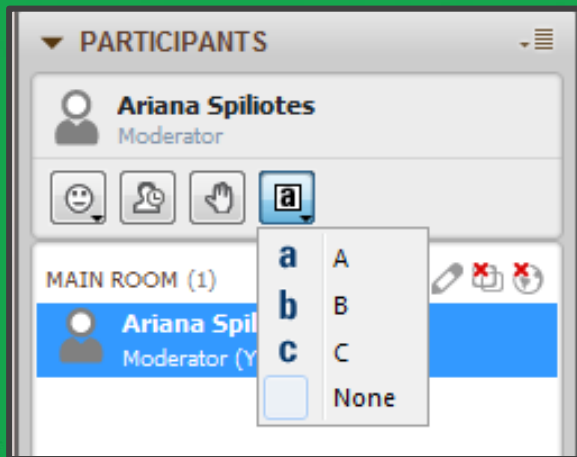
National Collaborative on Childhood Obesity Research



William H. Dietz, MD, PhD

Director, Sumner M. Redstone Global Center for Prevention and Wellness
The George Washington University

Interactive Poll



How familiar are you with today's topic?

A) Very familiar

B) Somewhat familiar

C) Not familiar



A New Model for Integrating Clinical-Community Systems to Tackle Obesity

William H. Dietz, MD, PhD, Director
Sumner M. Redstone Global Center for Prevention and Wellness
The George Washington University

Disclosures

IOM Roundtable on Obesity Solutions

- Composition
- Mission
- Innovation Collaboratives
 - Physical Activity in Youth
 - Clinical and Community Integration for Obesity Prevention and Control
 - Early Care and Education
 - CEO Innovation Collaborative



Roundtable on Obesity Solutions: Mission

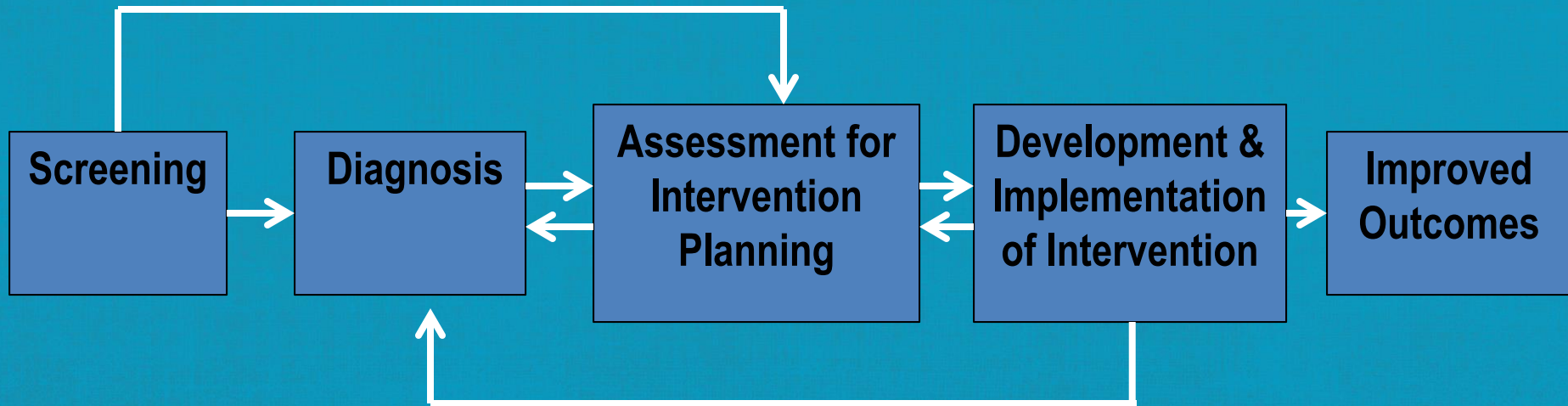
The Roundtable provides a trusted venue for enhancing and accelerating discussion, development, and implementation of multi-sector collaborations, and policy, environmental, and behavioral initiatives that will increase physical activity, reduce sedentary behavior, and improve the healthfulness of foods and beverages consumed to reduce the prevalence and adverse consequences of obesity and eliminate obesity-related health disparities.

IOM Roundtable on Obesity Solutions

- Composition
- Mission
- Innovation Collaboratives
 - Physical Activity in Youth
 - Clinical and Community Integration for Obesity Prevention and Control
 - Early Care and Education
 - CEO Innovation Collaborative



Pathway to Improved Outcomes



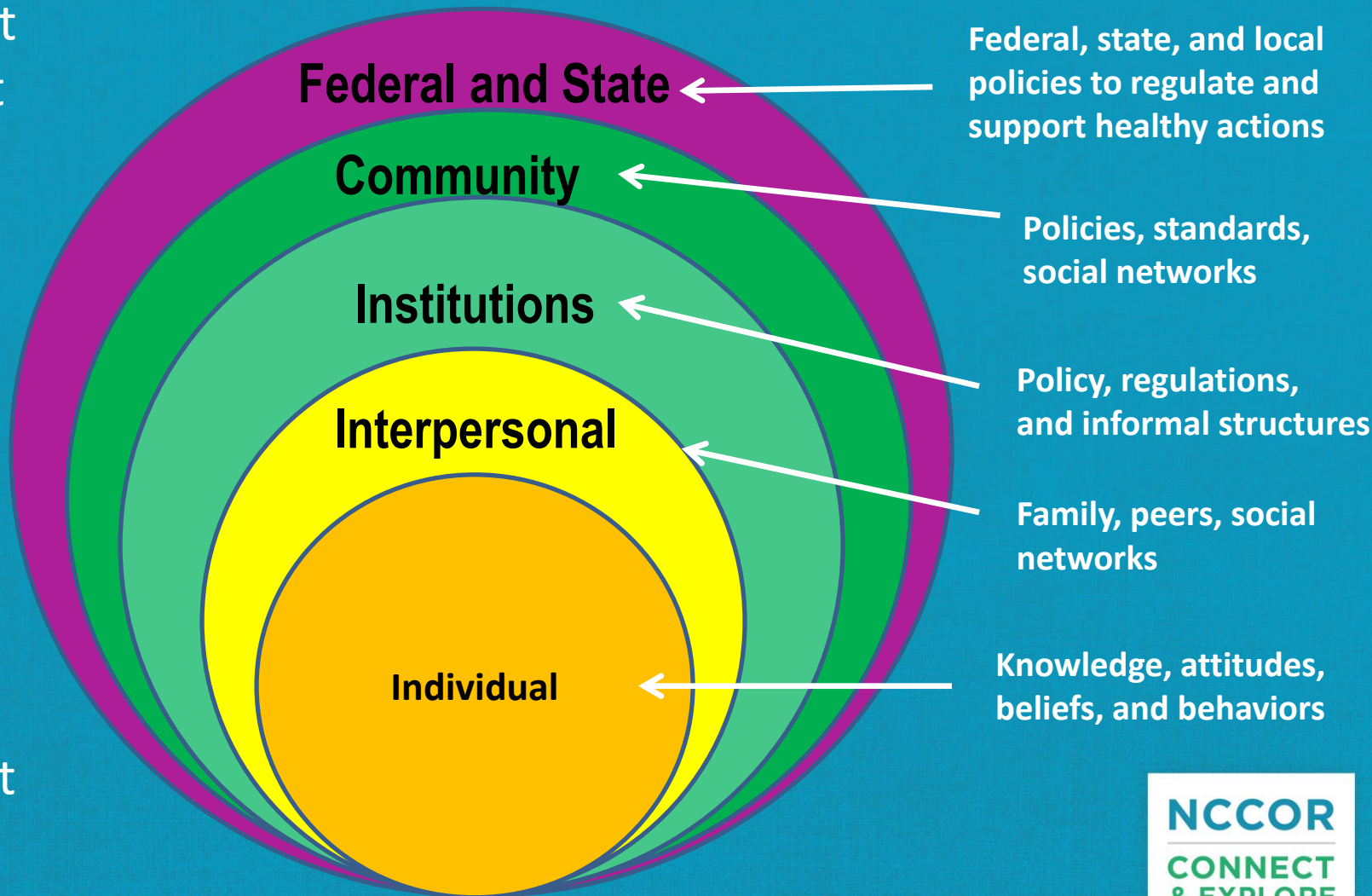
Source: Autism spectrum disorders: Guide to evidence-based interventions. Missouri Autism Guidelines Initiative. 2012. Available from: <http://autismguidelines.dmh.mo.gov/documents/Interventions.pdf>

Social Ecological Model

Greatest
Impact



Smallest
Impact



Chronic Care Model



Chronic Care Model

Environment

Family
School
Worksite
Community



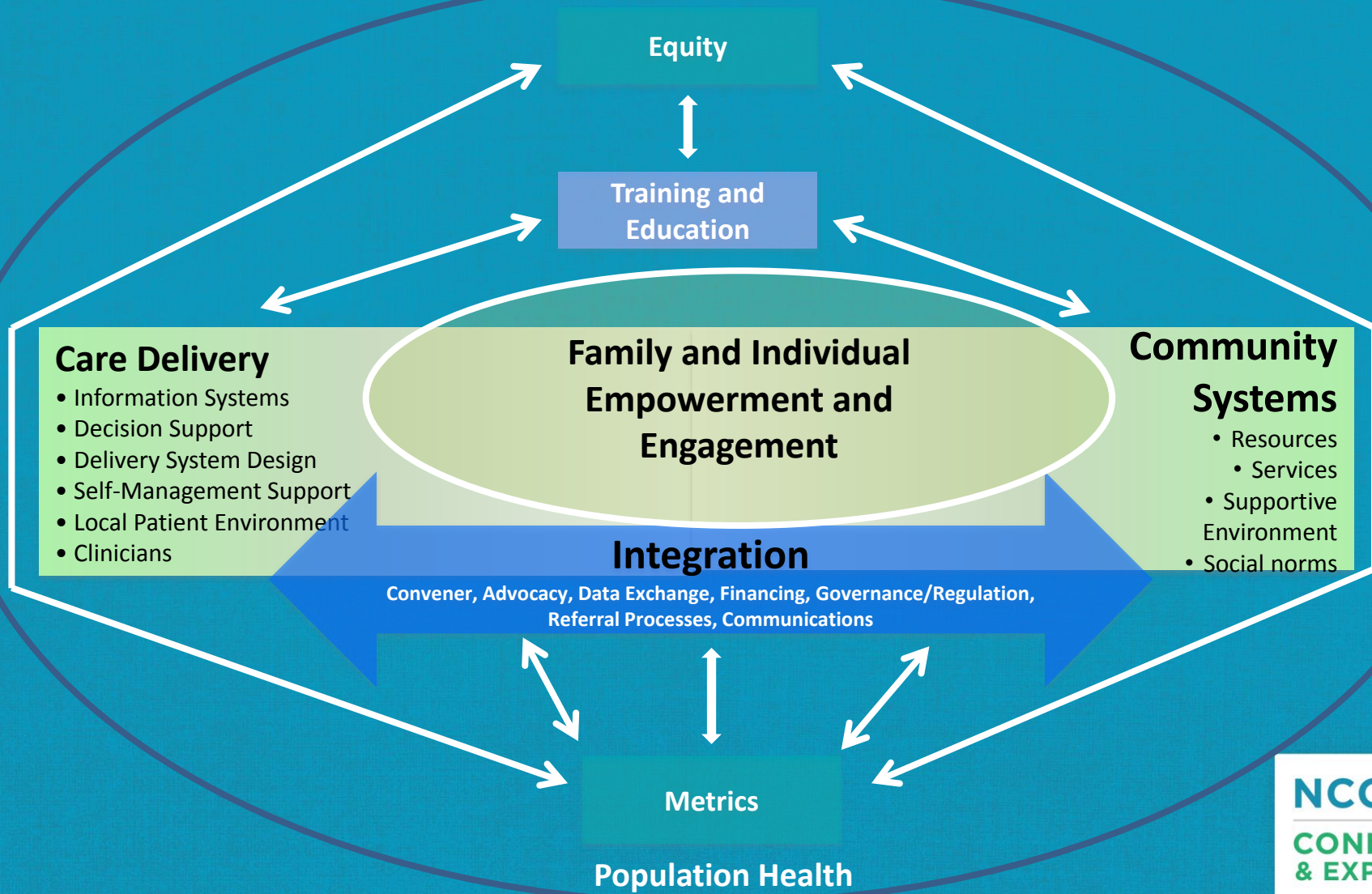
**Family/Patient
Self-Management**

Medical System

Information Systems
Decision Support
Delivery System Design
Self Management Support



Framework for Integrated Clinical and Community Systems of Care



Functions of the Integrator(s)

- Serve as a trusted and accountable leader
- Engage partners from multiple sectors
- Facilitate agreement among multi-sector stakeholders on shared goals and metrics
- Assess community resources, including workforce capabilities, and work with partners to make appropriate adjustments
- Work at the systems level to make policy and practice changes in public and private sectors
- Convey what works at the policy/systems practice levels to reach sufficient scale



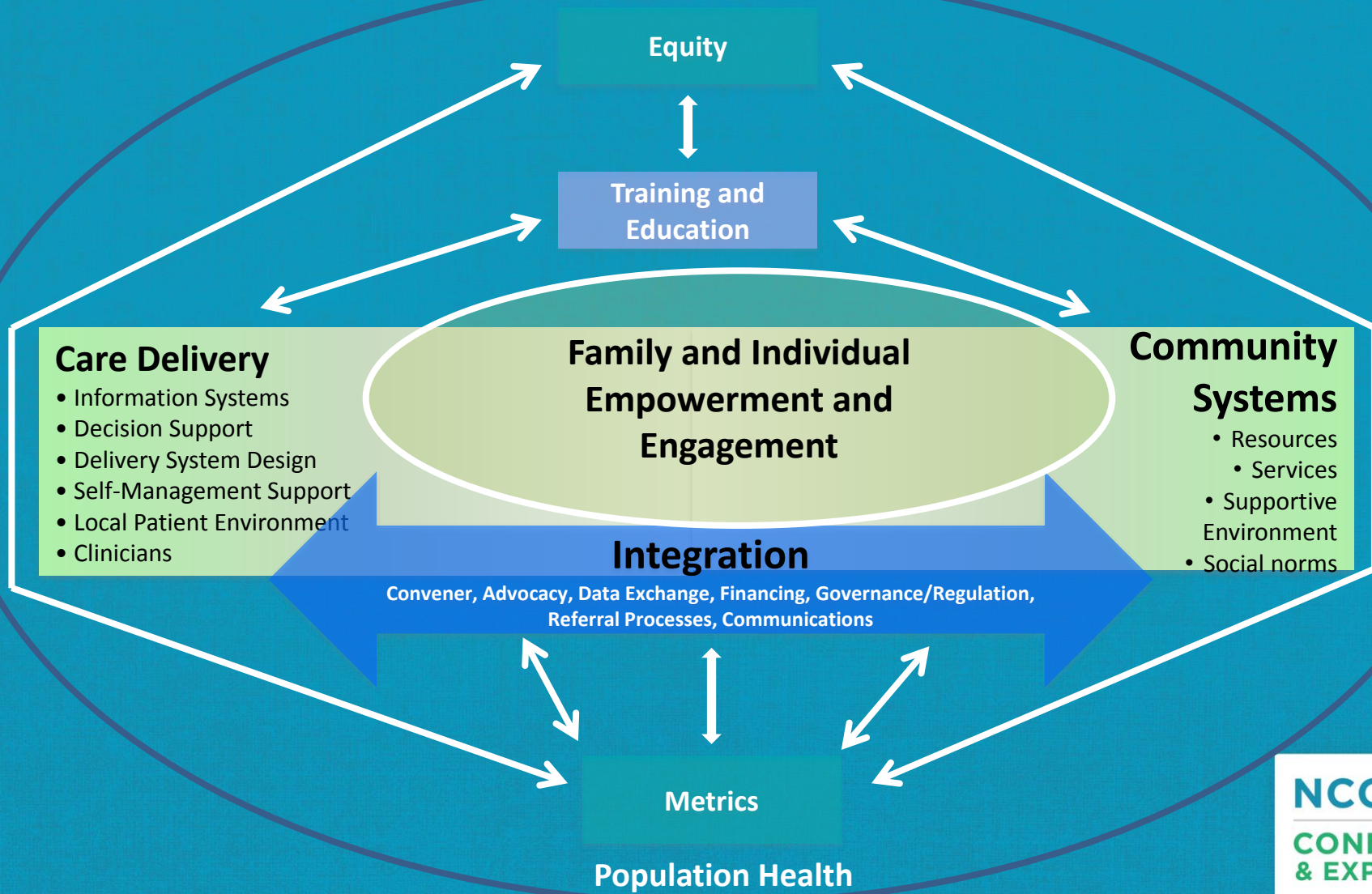
Functions of the Integrator(s)

- Sustain change by impacting policies and practices in collaboration with institutions and community partners at the local, community, and state levels
- Pursue financial sustainability including opportunities to employ multiple funding streams
- Gather, analyze, monitor, integrate, learn, and share data at the individual and population level
- Identify and connect with system navigators who help individuals coordinate, access, and manage multiple services and supports
- Develop communication system and communicate with affected sectors, systems, and communities



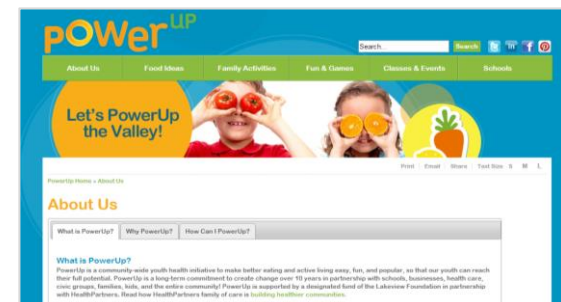
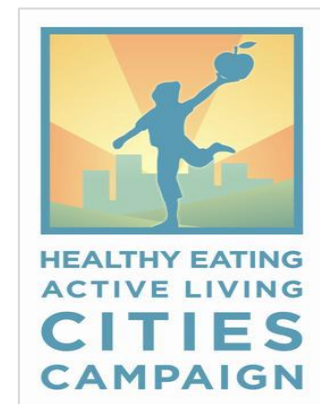
Source: Integrator role and functions in population health improvement initiatives. Nemours. 2012. Available from: [http://www.improvingpopulationhealth.org/Integrator role and functions_FINAL.pdf](http://www.improvingpopulationhealth.org/Integrator%20role%20and%20functions_FINAL.pdf).

Framework for Integrated Clinical and Community Systems of Care



Examples of Elements within the Framework

- YMCA – Diabetes Prevention Program
- HealtheRX
- Kaiser Permanente – HEAL programs
- St. Croix Valley – HealthPartners



Training Initiative

- Joint effort with Bipartisan Policy Center, American College of Sports Medicine, Alliance for a Healthier Generation, and Institute of Medicine Integrated Health Innovation Collaborative
- 16 organizations
- Identification of common competencies
- Environmental scan
- Development of materials and toolkit(s)

Competencies Relevant to Obesity Prevention and Control

- Use of appropriate terms for obesity
- Sensitivity to bias and stigma
- Behavior change strategies
- Ability to work with and within teams
- Use of information technology
- Ability to work across sectors
 - Interdisciplinary
 - Clinical:Community
- Align clinical services with severity
- Focus on health as well as disease

People First Language

- Overweight is a description
- Obese is an identity
- Obesity is a disease
- An obese person is more likely to be held responsible for their weight
- Describing a person with obesity is more likely to focus attention on cause

Language in Obesity Counseling

Terms to Use

Weight

Unhealthy weight

Healthier weight

Increased Body Mass Index (BMI)

Eating habits

Physical activity

Terms to Avoid

Obesity

Heaviness

Fat

Unhealthy BMI

Diet

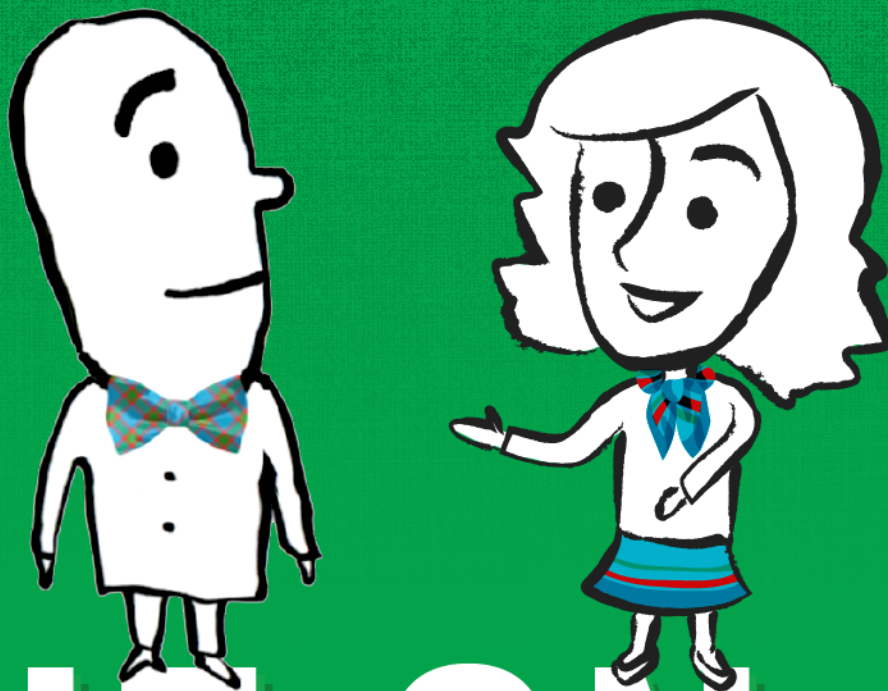
Exercise

Source: Puhl R et al. *Int J Obesity* 2013;37:612

Source: Wadden T & Didie E. *Obesity Res* 2003;11:1140

Competencies Relevant to Obesity Prevention and Control

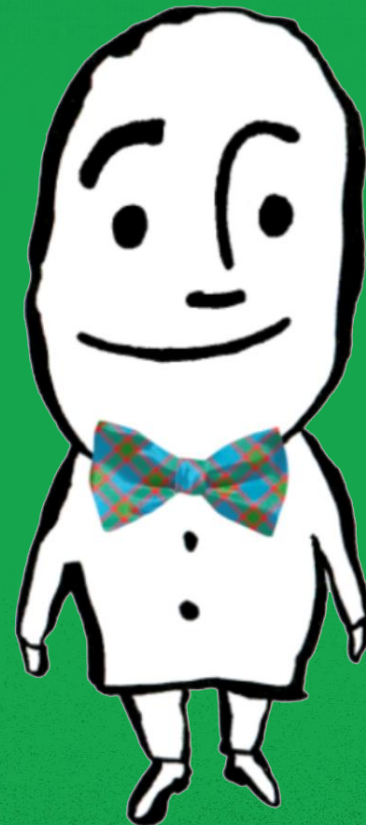
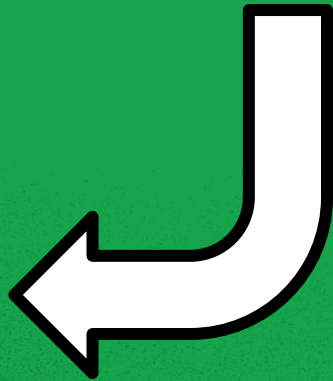
- Use of appropriate terms for obesity
- Sensitivity to bias and stigma
- Behavior change strategies
- Ability to work with and within teams
- Use of information technology
- Ability to work across sectors
 - Interdisciplinary
 - Clinical:Community
- Align clinical services with severity
- Focus on health as well as disease



ONE ON ONE

Questions?

Please type your question(s) in the chat box located on the left.



One on One

Question:

Some aspects of the model have been implemented and demonstrated success. What opportunities exist to begin fully implementing this model?

One on One

Question:

What changes could health care systems and communities begin to implement that would offer the highest impact on reducing childhood obesity?

One on One

Question:

What are the unresolved challenges related to training?

One on One

Questions from the Audience

What's Next?



NCCOR's Health Care Efforts

- NCCOR convenes the Engaging Health Care Providers and Systems workgroup
- The workgroup seeks to gather findings from research on gaps and opportunities that can be translated into and used in clinical and community settings

NCCOR Roundtable

Clinical-Community Engagement Models: What Works and What Doesn't

- **Date:** November 9-10, 2015
- **Focus:** Discuss various clinical-community models following a format that allows for similarities and differences between models and notes current evaluation efforts and data
- **Goals:**
 - Describe community engagement models and programs, illustrating how health care and communities can collaborate to address childhood obesity
 - Describe the program- or system-level strategies they employed and if these are amenable to inclusion as a defined community benefit
 - Describe the degree to which current efforts have undergone evaluations
 - Provide recommendations for optimizing the evidence base and employing evaluation metrics

This meeting is closed/invite-only
NCCOR will share key insights following the meeting

It's National Childhood Obesity Awareness Month!

Show your support for childhood obesity research—join the NCCOR Thunderclap!

To join, visit
www.nccor.org/blog

“6 ways to celebrate Nat'l Childhood Obesity Awareness Month! RT to support #childhoodobesity research! #NCOAM
<http://thndr.it/1hkOeNq>”



The National Collaborative on...

FOLLOW THIS
ORGANIZER

EMBED
</>



Further Questions?

Other questions about NCCOR or upcoming activities?

- Email the NCCOR Coordinating Center at nccor@fhi360.org



[ABOUT](#)

[PROJECTS](#)

[TOOLS](#)

[RESOURCES](#)

[PUBLICATIONS](#)

[EVENTS](#)



NCCOR RESOURCES

[NCCOR Communications](#)

[Infographics](#)

[NCCOR Videos](#)

[NCCOR Webinars](#)

RESOURCES FROM MEMBERS

[Interventions](#)

[Surveillance](#)

[Research and Evaluation](#)

[Leadership](#)

[Non-Health Partners](#)

[Other Resources](#)

NCCOR Overview Booklet

Learn about the National Collaborative on Childhood Obesity Research and its activities.



HAVE SOMETHING TO SAY? JOIN THE
CONVERSATION



READ AND SIGN UP FOR
OUR E-NEWSLETTER

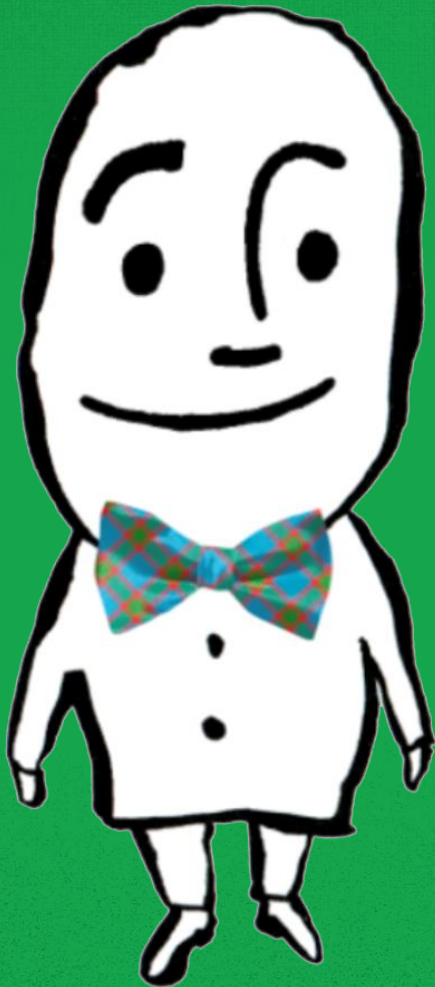


CHECK OUT
OUR BLOG



READ ABOUT OUR UPCOMING
FUNDING OPPORTUNITIES





Thank you!